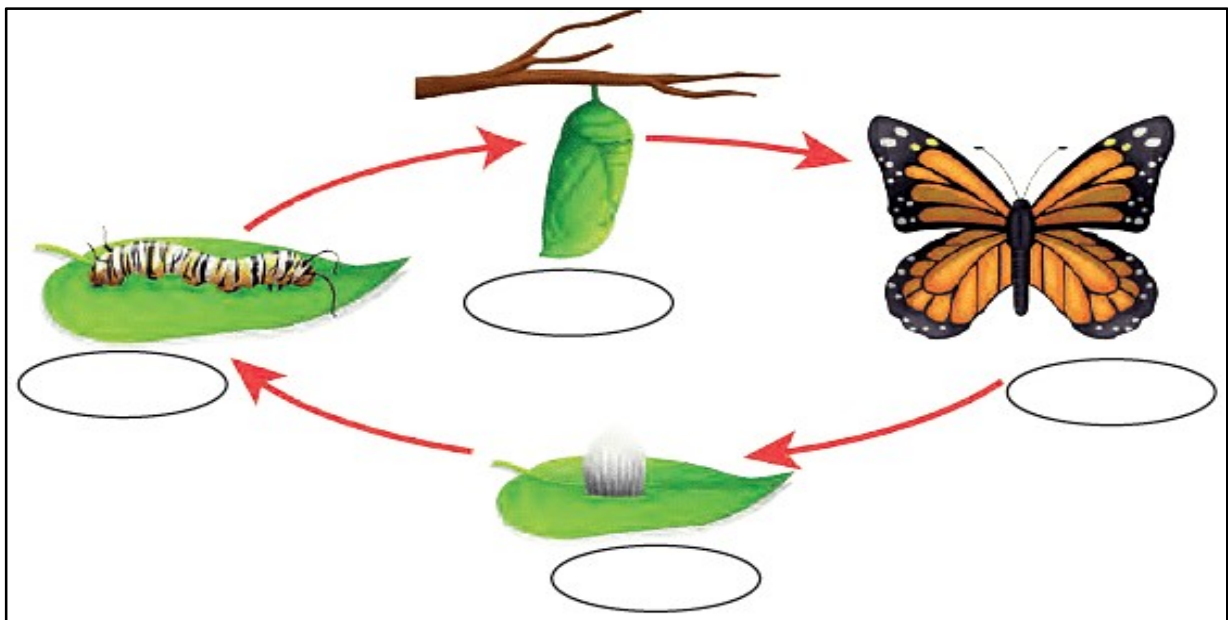


Q1. Search and complete the given table below:

S.No.	Animal	Young one
1.	Human	
2.	Cat	
3.	Dog	
4.	Butterfly	
5.	Hen	
6.	Cow	
7.	Frog	

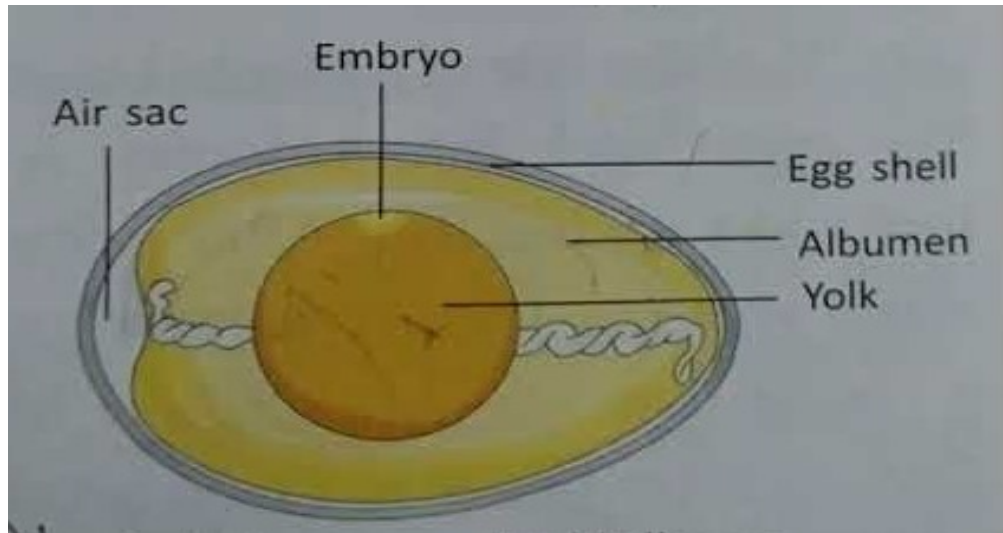
Q2. Label the life cycle of butterfly.



**Q3. Answer the following questions:**

- a) **What is reproduction?**
- b) **What is food chain?**
- c) **Why only few eggs of fish survive, though it lays thousands of eggs?**
- d) **Explain the life cycle of butterfly.**

**Q5. Case study:**



- 1. Identify the above given diagram and name it.
- 2. What is the yellow part in the centre of the diagram called and what is its function?
- 3. What is albumen?