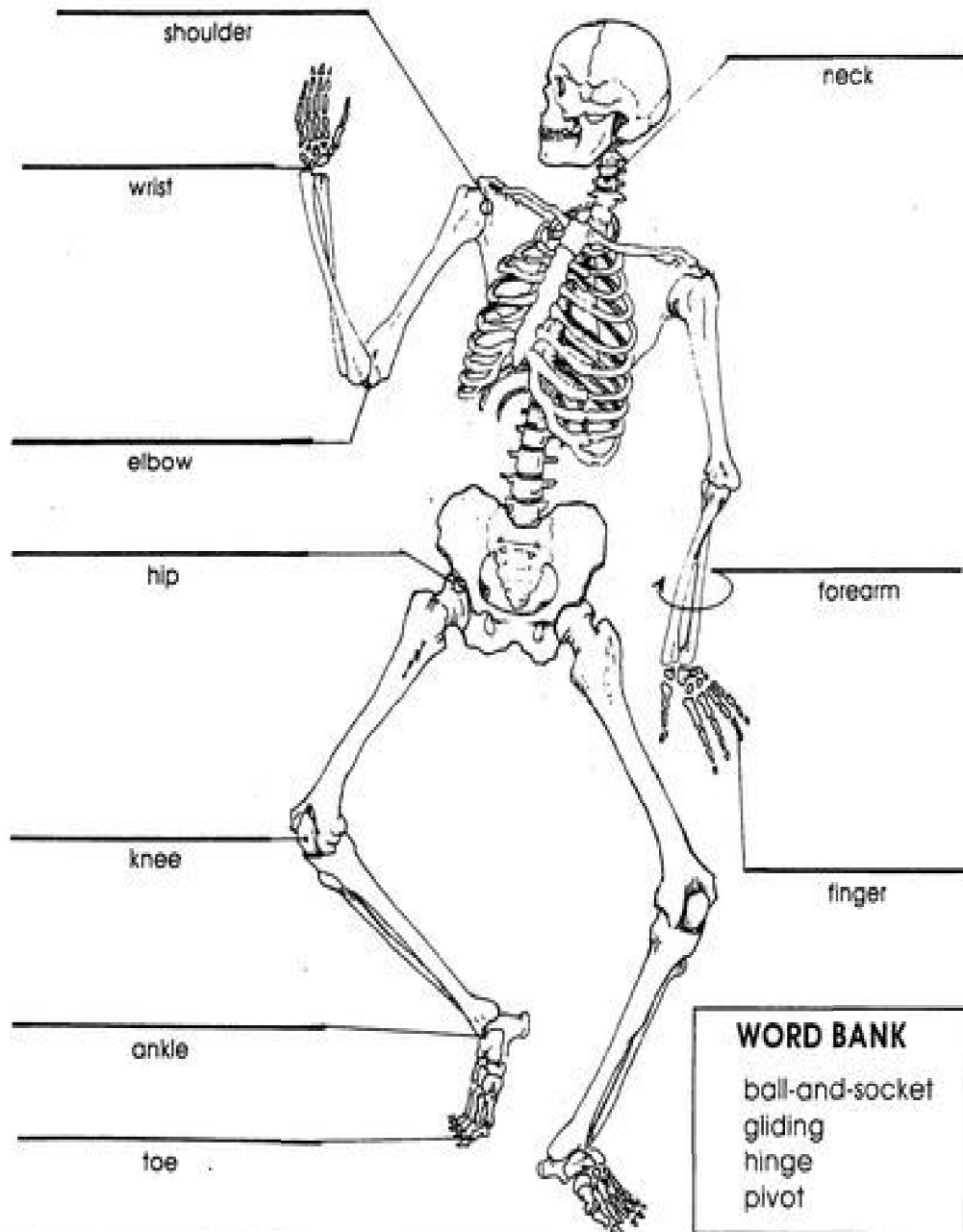


SCIENCE WORKSHEET : CLASS-5

CHAPTER -3 : HUMAN BODY

The place where two or more bones meet is called a **joint**. Joints are either movable or immovable. There are four kinds of movable joints: **hinge**, **pivot**, **gliding** and **ball-and-socket**. Label each joint on the skeleton below.



Use the words in the box to fill in the blanks.

protect	skeleton	skeletal	jellyfish
blood	ribcage	cranium	marrow
shape	tendon	ligaments	move
bones	minerals		

There are around 206 _____ in the adult human body. These bones plus the connecting tissue make up the _____ system.

The skeletal system is very important for many reasons. Some bones help _____ our organs. The _____, for example, protects our brains and the _____ protects our lungs.

The skeletal system also gives us our _____. Without a _____, we would be shapeless blobs like a _____ or an earthworm. Our bones, which are connected by _____, provide a frame for the rest of the organs, giving us our unique body shape.

The skeletal system also helps us _____. Muscles, which are attached to bones by _____, cause the bones to move, which makes our bodies move.

Bones also help your body store _____ such as calcium. If there is too much calcium in the blood, some of it becomes bone. If there is not enough calcium, then the bones gives some to the blood.

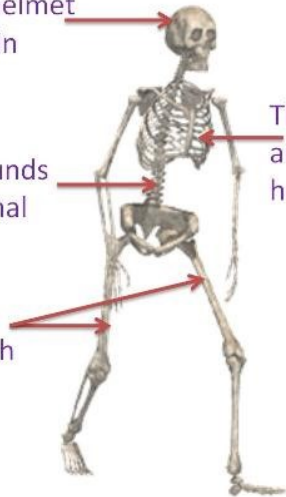
Finally, another important function of bones is to produce _____. Inside bones there is a soft substance called _____, which is used to make blood cells.

CASE STUDY-

The skull acts like a helmet and protects the brain inside.

The backbone surrounds and protects the spinal cord.

Bones help us in movement along with muscles and joints.



The rib cage acts like an armour and protects our heart and lungs inside.

Q1. How many ribs are there in our body?

Ans. _____

Q2. What are the last two ribs of the ribcage called?

Ans. _____

Q3. Name the longest bone in the body.

Ans. _____

Q4. What will happen if we have a single bone in our backbone?

Ans. _____

Q5. Name the only movable bone in the skull.

Ans. _____

Q6. Name the bones of lower leg.

Ans. _____

Q7. Name the bones of the arm.

Ans. _____